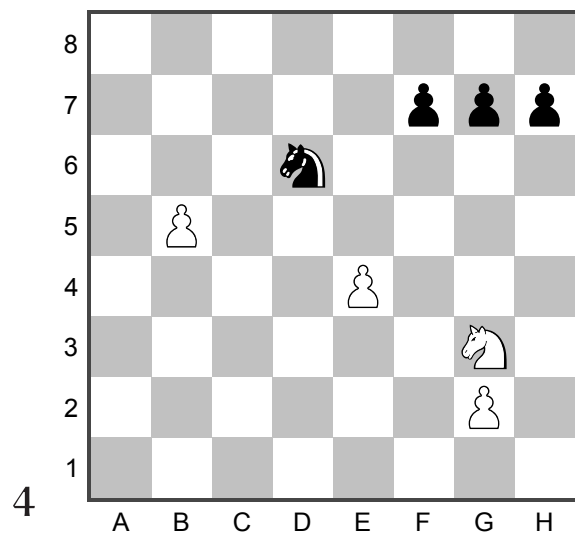
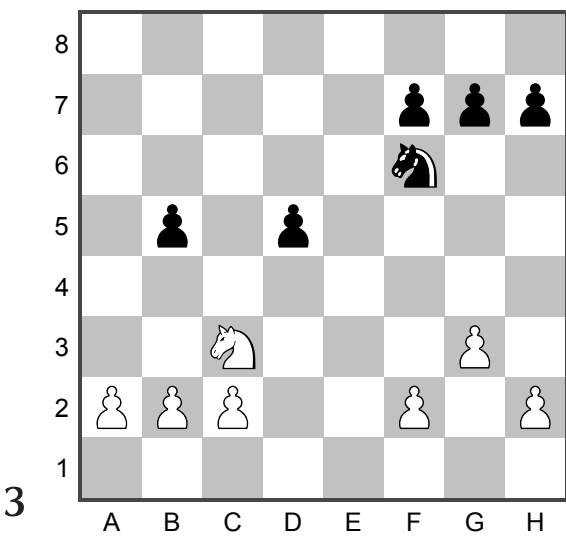
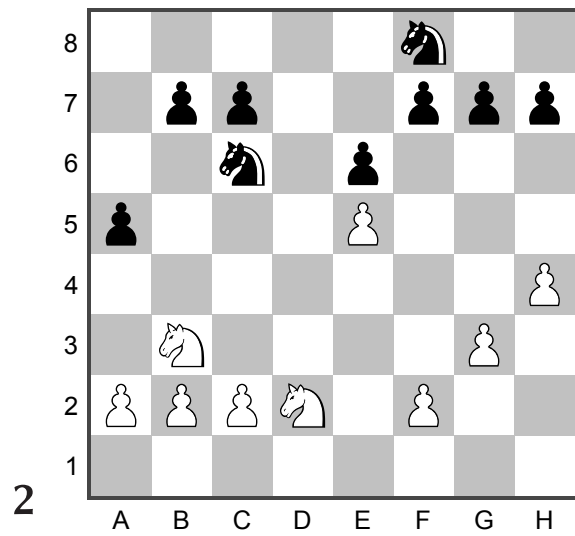
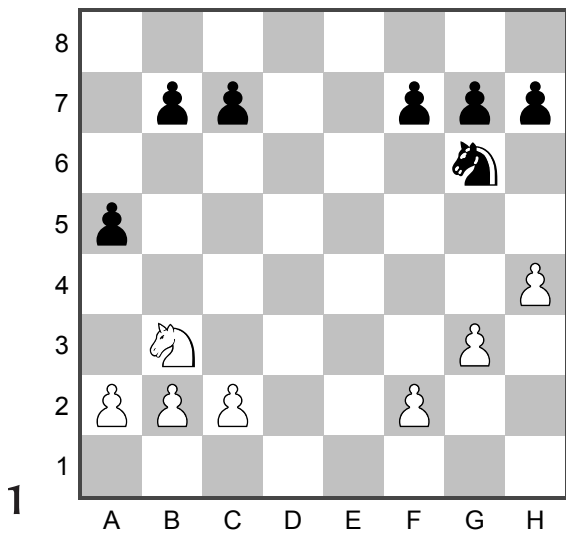


Knight Captures Pawn

In each diagram there are two captures possible. The white and black Knights could each make a capture, or the white Knight could make two captures, or the black Knight could make two captures. One of the captures is good because it is safe and one is bad because the Knight himself could be captured.

Draw an arrow to show the possible pawns the Knights could capture. Remember: it is possible for one Knight to have two captures. Circle the good (safe) capture.



Who Equals the Queen?

The Queen is the most powerful piece on the chessboard and worth nine points. What other pieces could add together to equal the Queen?

Example: $N + N + N = Q$

$$3 + 3 + 3 = 9$$

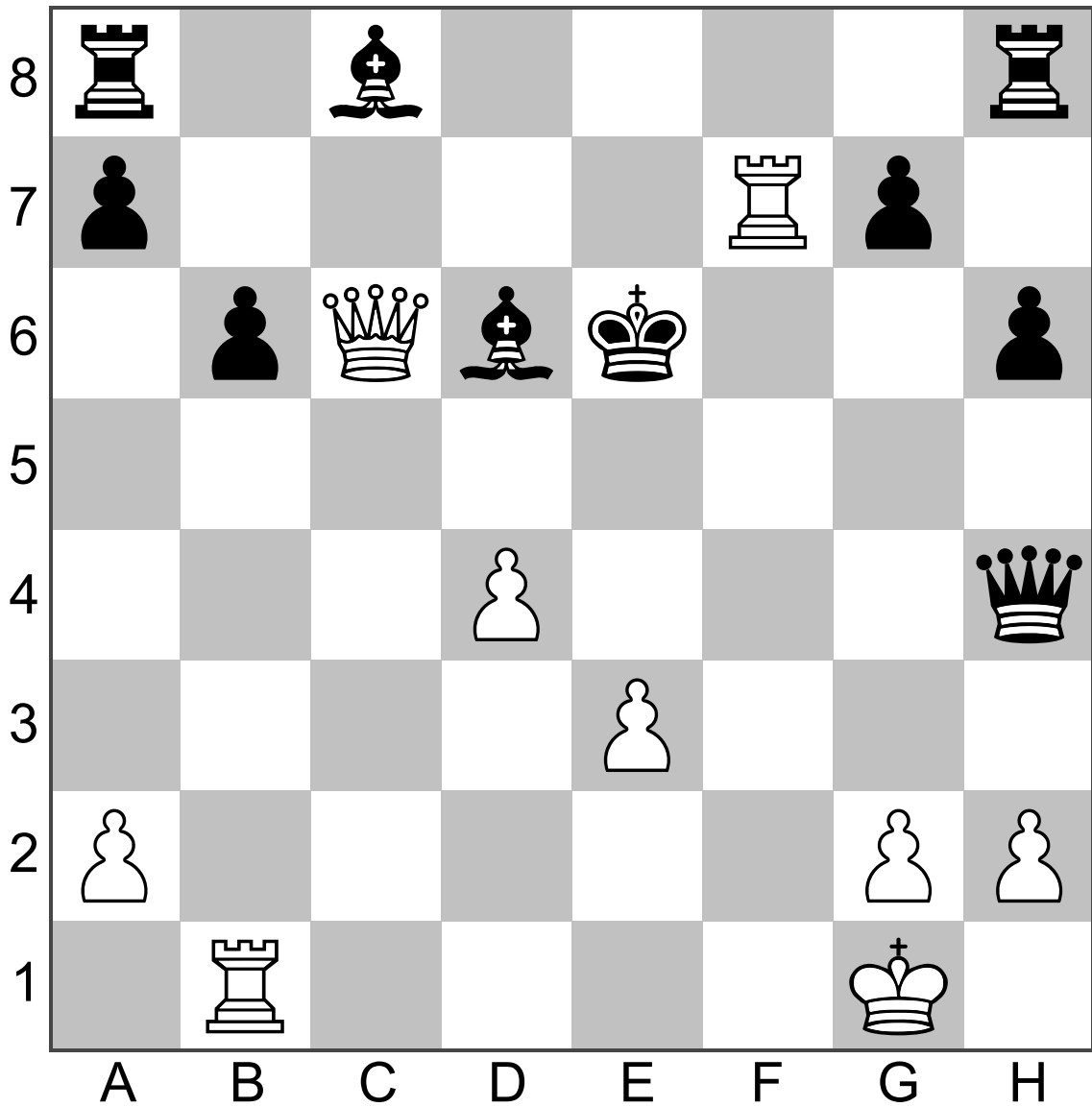
What other combination of chess pieces can you add together to equal the Queen? Write all of your answers below.

Data Collection

Put a circle inside each square the white Queen could move to. Be sure to include captures!

For each move put an X through the square if, after the white Queen moves to that square, Black can capture the white Queen on his turn.

Examine the moves without an X and put a big star over the best move for the Queen.



The best move is: